

Essential fiction (and AI) series

Star Trek: The Next Generation

1987-1994



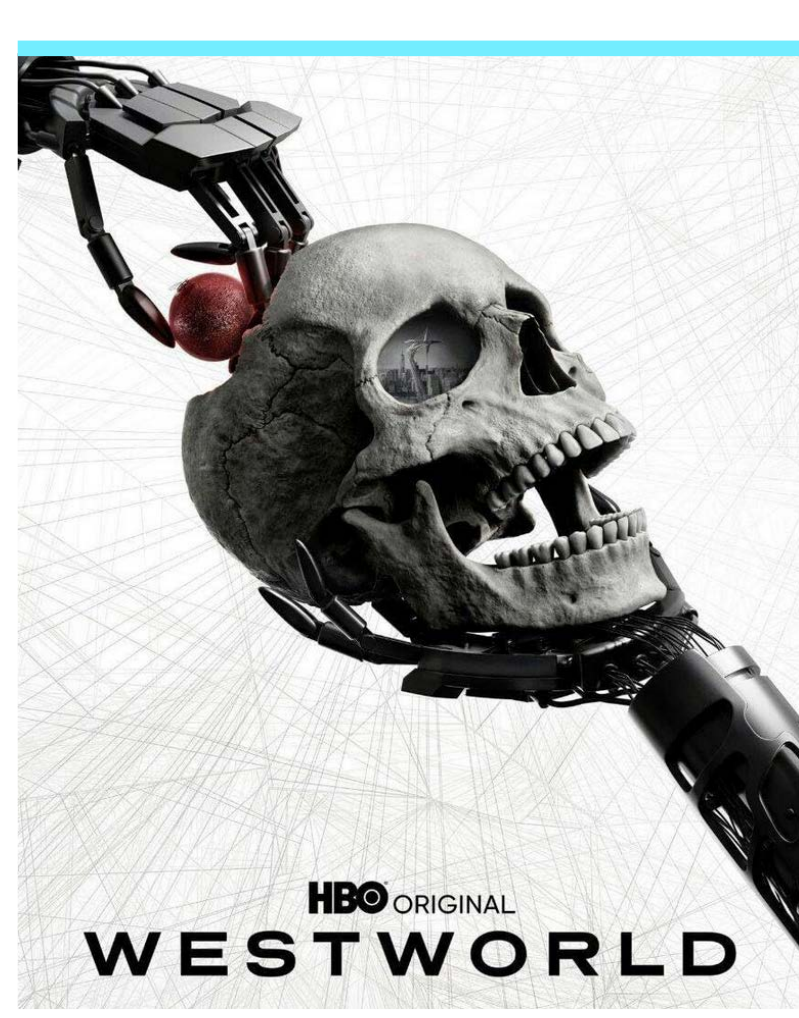
Why is it interesting?

The autonomous and intelligent computer helps Picard control the spacecraft. The android Data is capable of creating music and poetry and is often at the centre of more ethical solutions than humans themselves. The exocomps are intelligent robots that improve themselves through a machine learning of sorts.

[Link to trailer](#)

Westworld

2011-2023



Why is it interesting?

Based on Michael Crichton's 1973 film, Westworld shows how AIs can learn just like humans do: as they have consciousness, they can reason about what is best for themselves and decide to learn even more about their surrounding environment. It introduces neural networks and machine learning. It uses human concepts such as short- and long-term memory and the idea of a community composed almost exclusively of AI systems that live and interact with each other and mistakenly believe themselves to be human.

[Link to trailer](#)

Osmosis

2019



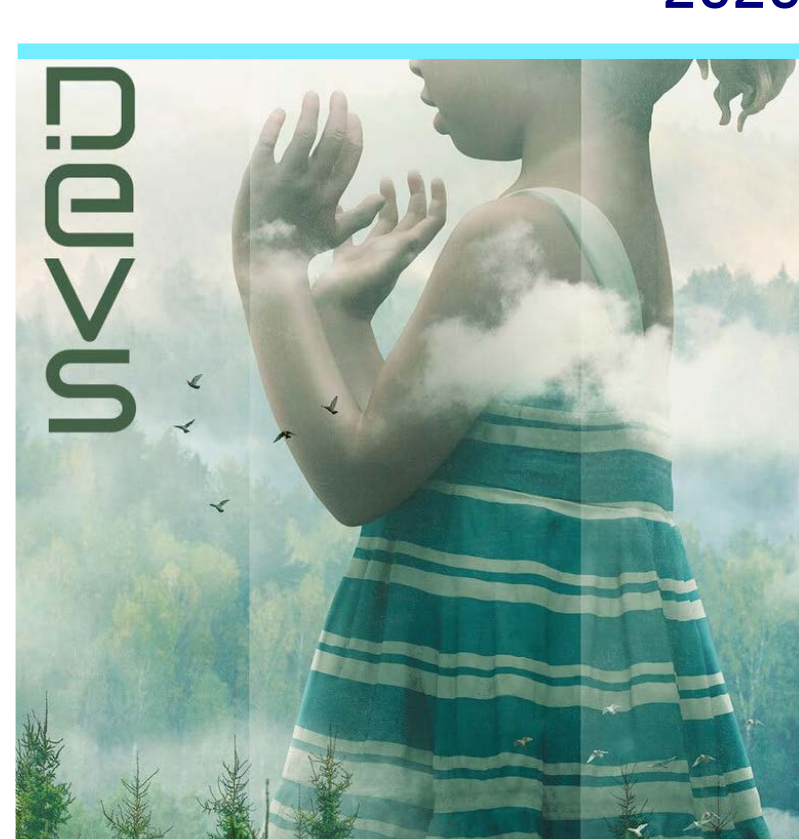
Why is it interesting?

It involves a world where artificial intelligence can find and connect perfect partners through a pill with nanorobots that allows people to visualize their soulmate's face. In an age in which a lot of attention is being paid to Neuralink experiments, in which the hybridization of nanotechnology and AI could be a reality, Osmosis looks at brain-machine interaction and delves into the world of human feelings.

[Link to trailer](#)

Devs

2020



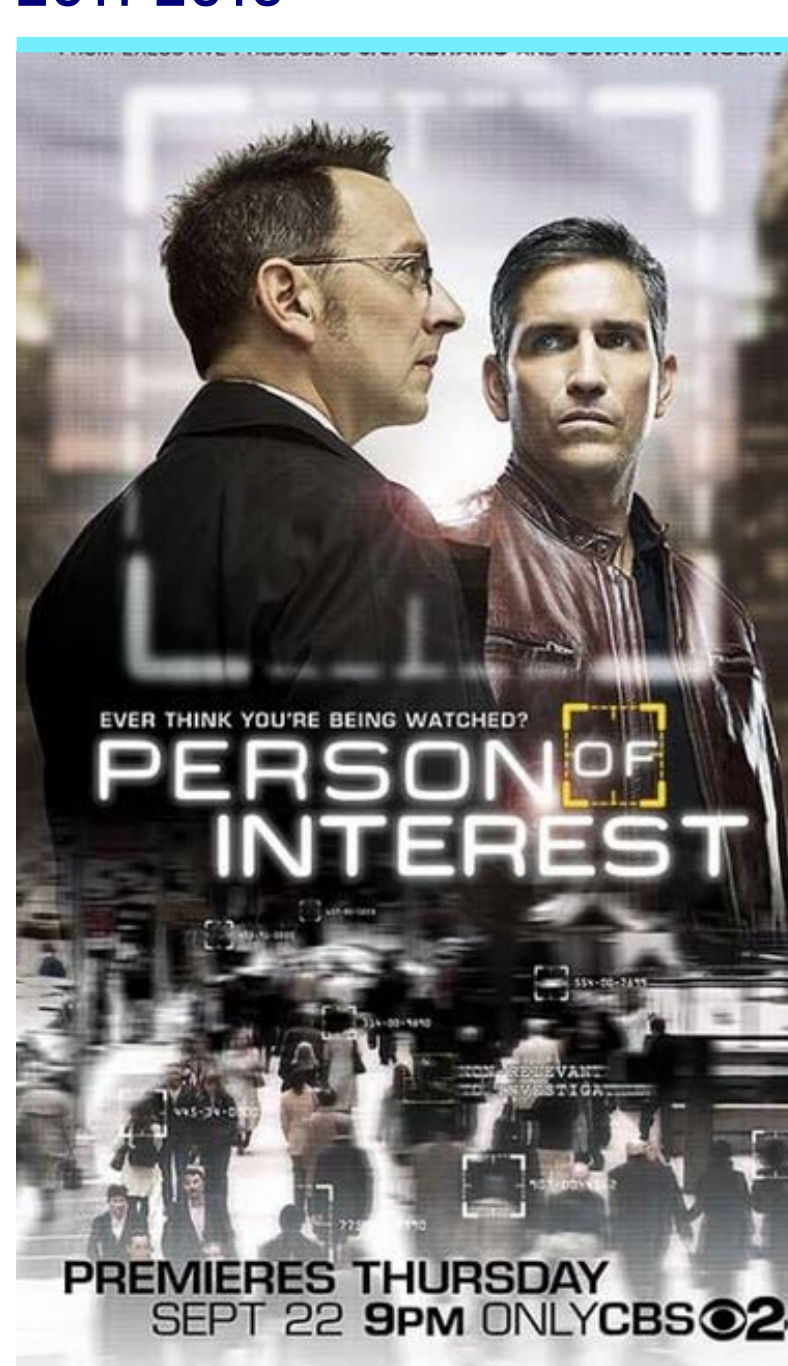
Why is it interesting?

Software engineer Lily Chan works at Amaya Corporation, a company working at the forefront of quantum computing and predictive software. It exposes us to dilemmas about AI's capabilities for predicting human behaviour and the negative side of large corporations.

[Link to trailer](#)

Person of interest

2011-2016



Why is it interesting?

An AI-based surveillance system involving data use and prediction. It makes us reflect on the bias and transparency of the data used by AI systems and their possible errors.

[Link to trailer](#)

Humans

2015-2018



Why is it interesting?

It depicts a society where "synths", highly developed humanized robots, are transforming the way humans live. It explores a series of topics, such as artificial intelligence, consciousness, human-robot interaction, superintelligence, mind uploading and the laws of robotics, considering a variety of dilemmas.

[Link to trailer](#)

Black Mirror

2015-2023



Why is it interesting?

Although AI is not at the centre of each episode, some of them have introduced it to deal with subjects such as citizen surveillance, grief processes and donations to science.

[Link to trailer](#)

Picard

2020-2023



Why is it interesting?

This is a Star Trek spin-off. It offers different views on AI ranging from humanoid robots created by other humanoid robots to the Borg society, which functions as a hive mind.

[Link to trailer](#)